



Excellence in education.
EVERY DAY.


THOMPSON
SCHOOL DISTRICT



A school census completed in 1869 indicated a total of 48 students in those original three districts, which were named Hillsborough, Old St. Louis and Namaqua. Initially, the number of districts in this region grew; nine districts were serving approximately 375 students in 1880, and only 20 years later, the number of school districts was at 18 with 1,424 students. Three years later, in 1903, the region was serving 2,092 pupils.

It was the advent of school busing that ultimately transformed education in the area. Consolidation and annexation helped to create larger districts. Only 30 districts had not been consolidated in 1960; nine of them then merged to create what is now Thompson School District. Though it's mistakenly referred to at times as "Thompson Valley School District," the district's formal name is "Thompson School District."

R2-J.” The “R” in the name indicates that the #2 district has been reorganized, while the “J” signifies that the boundaries of the district lie “jointly” in multiple counties.

A total of 3,675 students comprised the district in 1960. The elementary schools in operation at that time were Summit, Big Thompson, Lincoln, Washington, Garfield and Berthoud. Before it became Bill Reed Middle School, that building served both junior and senior high school students.

Today, Thompson School District is the 17th largest school district in Colorado, encompassing 362 square miles and including the cities of Loveland, Berthoud and the southern part of Fort Collins as well as parts of Larimer, Weld and Boulder counties. It is the largest employer in Loveland and Berthoud. Thompson is a pre-K through 12th grade district with 13 early childhood centers, 20 elementary schools, five middle schools, five high schools, one K-8 school and two charter schools. District enrollment is approximately 16,000 students.



Basic Statistics

APPROXIMATELY
16,000
STUDENTS

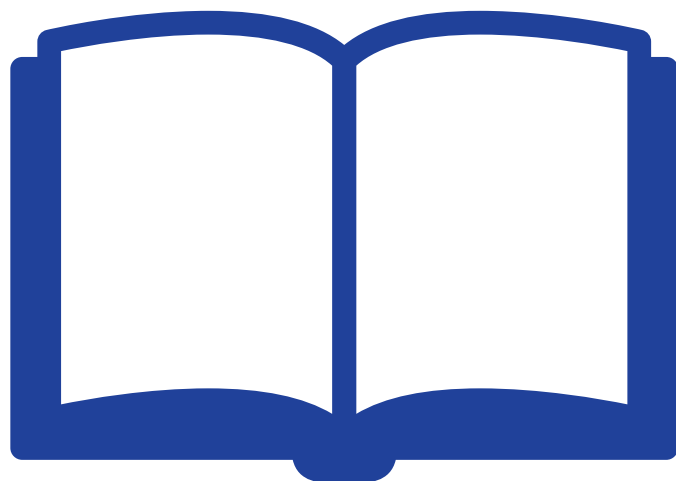
20 ELEMENTARY SCHOOLS
5 MIDDLE SCHOOLS
5 HIGH SCHOOLS
2 CHARTER SCHOOLS
1 K-8 SCHOOL

DISTRICT ENCOMPASSES
362 SQUARE MILES
AND IS THE LARGEST EMPLOYER IN
Loveland & Berthoud





- » Educational options include: International Baccalaureate (IB) and pre-IB programs; Science, Technology, Engineering & Mathematics (STEM); the Loveland area Integrated School of the Arts (LISA), K-12; and Advanced Placement programs
- » Home to the Loveland/Berthoud Enrichment Access Program (LEAP), which supports parents who choose to school their children at home or outside a public setting
- » District assessment scores are consistently above state averages
- » Approximately 38% of students qualify for the federal free or reduced price lunch program
- » The district's Nutrition Services department served approximately 1.54 million meals at schools and facilities during the 2015-2016 school year
- » Thompson students were awarded more than \$19 million in postsecondary scholarships in 2015-2016
- » Thompson School District has active and thriving partnerships with the Loveland Chamber of Commerce, the Berthoud Chamber of Commerce, local Rotary clubs, the Lions Club, United Way of Larimer County and other valuable community organizations



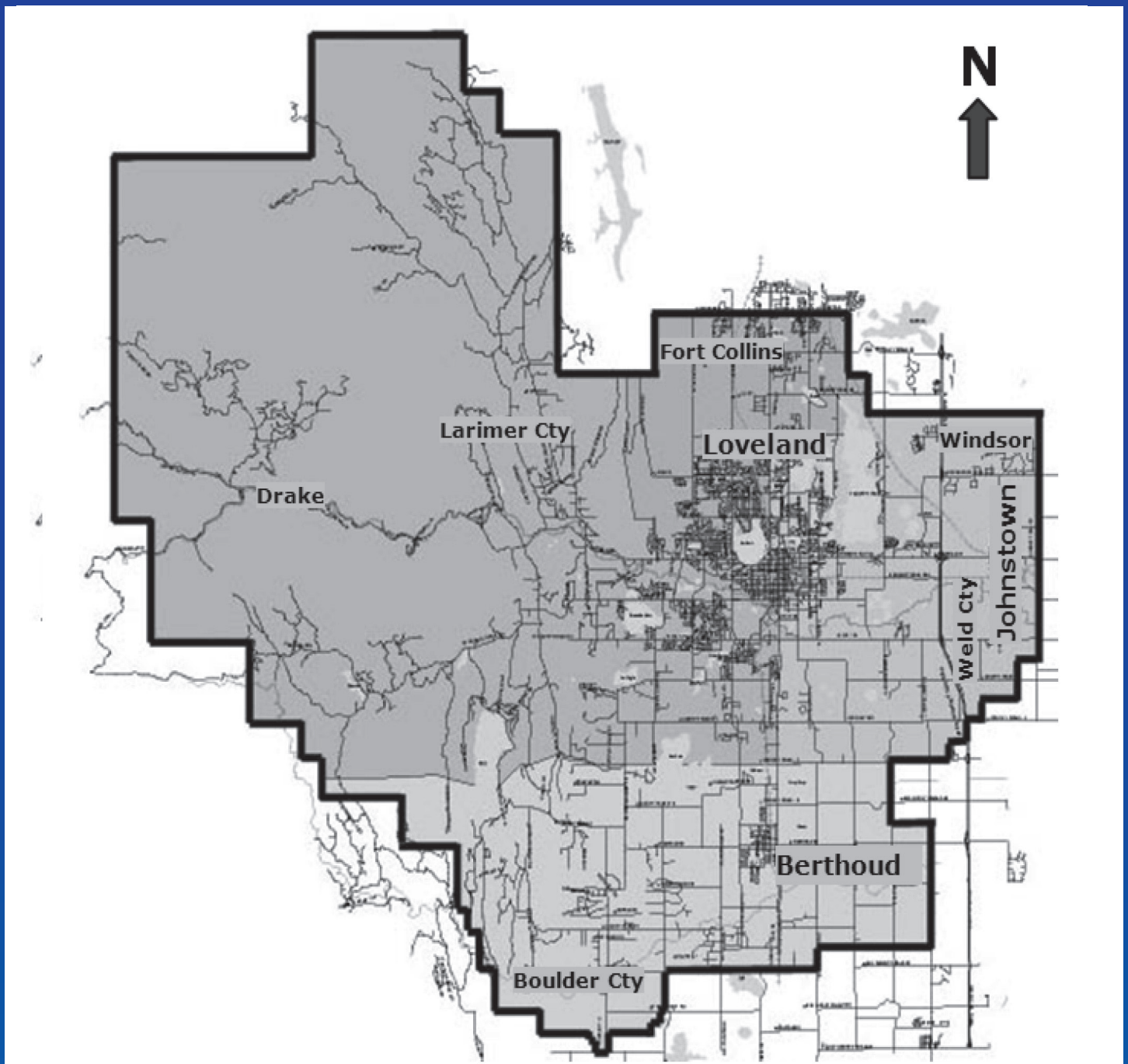
**DURING THE
2015-2016
SCHOOL YEAR,
A TOTAL OF**

3,381

**AUTHORIZED
VOLUNTEERS
DONATED**

79,362

**HOURS TO
THOMPSON
SCHOOL
DISTRICT**



SCHOOLS

Thompson School District includes 20 elementary schools, five middle schools, five high schools, one K-8 school and two charter schools. Students in the district are assigned to attend a specific school based upon the geographical attendance area of their residence. However, students also have the option of attending a school outside of their assigned school area through the district's "school of choice" program. Please visit www.thompsonschoools.org for more information.

Amazing things are happening every day at Thompson schools! You are welcome to visit a school to get a personal look at the quality educational programs. Please contact any school to arrange for a visit.

EARLY CHILDHOOD

Early Childhood Centers are located at High Plains School, Turner Middle School, Berthoud Elementary, Carrie Martin Elementary, Centennial Elementary, Cottonwood Plains Elementary, Coyote Ridge Elementary, Laurene Edmondson Elementary, Lincoln Elementary, Monroe Elementary, Ponderosa Elementary, Sarah Milner Elementary and Winona Elementary. Please see the contact information below.

ELEMENTARY SCHOOLS

Berthoud Elementary

560 Bunyan Ave., Berthoud, CO 80513
970-613-7500

B. F. Kitchen Elementary

915 Deborah Drive, Loveland, CO 80537
970-613-5500

Big Thompson Elementary

7702 W. Highway 34, Loveland, CO 80538
970-613-5600

Carrie Martin Elementary

4129 Joni Lane, Loveland, CO 80537
970-613-5700

Centennial Elementary

1555 W. 37th St., Loveland, CO 80538
970-613-5800

Cottonwood Plains Elementary

525 Turman Drive, Fort Collins, CO 80525
970-613-5900

Coyote Ridge Elementary

7115 Avondale Road, Fort Collins, CO 80525
970-679-9400

Garfield Elementary

720 Colorado Ave., Loveland, CO 80537
970-613-6000

Ivy Stockwell Elementary

175 Fifth St., Berthoud, CO 80513
970-613-6100

Laurene Edmondson Elementary

307 W. 49th St., Loveland, CO 80538
970-613-6300

Lincoln Elementary

3312 N. Douglas Ave., Loveland, CO 80538
970-613-6200

Mary Blair Elementary

860 E. 29th St., Loveland, CO 80538
970-613-6400

Monroe Elementary

1500 N. Monroe Ave., Loveland, CO 80538
970-613-6500

Namaqua Elementary

209 N. Namaqua Ave., Loveland, CO 80537
970-613-6600

Ponderosa Elementary

4550 Florence Drive, Loveland, CO 80538
970-679-9500

Sarah Milner Elementary

743 Jocelyn Drive, Loveland, CO 80537
970-613-6700

Stansberry Elementary

407 E. 42nd St., Loveland, CO 80538
970-613-6800

ELEMENTARY SCHOOLS (continued)

Truscott Elementary

211 W. Sixth St., Loveland, CO 80537
970-613-6900

Van Buren Elementary

1811 W. 15th St., Loveland, CO 80538
970-613-7000

Winona Elementary

201 S. Boise Ave., Loveland, CO 80537
970-613-7100

K-8 SCHOOL

High Plains School

4255 Buffalo Mountain Dr., Loveland, CO 80538
970-679-9800

MIDDLE SCHOOLS

Bill Reed Middle School

370 W. Fourth St., Loveland, CO 80537
970-613-7200

Conrad Ball Middle School

2660 N. Monroe Ave., Loveland, CO 80538
970-613-7300

Lucile Erwin Middle School

4700 Lucerne Ave., Loveland, CO 80538
970-613-7600

Turner Middle School

950 Massachusetts Ave., Berthoud, CO 80513
970-613-7400

Walt Clark Middle School

2605 Carlisle Drive, Loveland, CO 80537
970-613-5400

HIGH SCHOOLS

Berthoud High School

850 Spartan Ave., Berthoud, CO 80513
970-613-7700

Ferguson High School

1101 Hilltop Drive, Loveland, CO 80537
970-613-5300

Loveland High School

920 W. 29th St., Loveland, CO 80538
970-613-5200

Mountain View High School

3500 Mountain Lion Drive, Loveland, CO 80537
970-613-7800

Thompson Valley High School

1669 Eagle Drive, Loveland, CO 80537
970-613-7900

CHARTER SCHOOLS

Loveland Classical Schools

3835 14th St. SW, Loveland, CO 80537
970-541-1507

New Vision Charter School

2366 E. First St., Loveland, CO 80537
970-593-6827



PROGRAMS

PROGRAMS AND CHOICE OPTIONS... A TERRIFIC FIT FOR ANY STUDENT!

Whatever your interests, Thompson School District has program or choice options that are perfect for your student and family. Our programming lineup is diverse, challenging and robust. Here are just a few of the many great choices offered. Many of these programs have an elementary, middle, and high school feeder system component. For more information and to see other available programs, please visit www.thompsonschoools.org.



ADVANCED PLACEMENT

Advanced Placement (AP) courses are offered at each of our district comprehensive high schools. AP courses follow a national curriculum provided by The College Board, the publishers of the SAT college entrance exam. These courses give students the opportunity to earn college credit while still in high school. Each May, AP exams are offered to students as they complete their coursework. Students earning a minimum score on the exam can receive either elective credit or course replacement credit depending on the college or university policy. For more information on the Advanced Placement Program, please visit www.CollegeBoard.com.

AGRICULTURAL EDUCATION PATHWAYS PROGRAM

Located at Thompson Valley High School and Berthoud High School, the Agricultural Education Pathways Program prepares TSD students for workforce readiness and continuing education beyond high school. The program is available to high school students throughout the district. In the Agricultural Education program, students will explore the 6 Pathways of Agricultural Education as well as gain in-depth information about our student-led leadership organization, FFA, develop leadership and employability skills for future careers and endeavors, and have the chance to participate in educational field trips and experiences pertaining to agriculture and FFA on a district, state and national level.

CONCURRENT ENROLLMENT/EARLY COLLEGE/ASCENT

Concurrent enrollment gives students an opportunity to graduate from high school with college credits. The cost for tuition is paid by Thompson School District at community college rates. Students can accelerate their progress toward earning advanced degrees and the working world. This program is open to all high school students who receive academic plan approval, meet application deadlines, and meet college course requirements. Students can take college courses of their choosing at Front Range Community College, Aims Community College or other university partners. Books and fees are not covered.

ENTREPRENEURSHIP PROGRAM (INCUBATOR)

In the entrepreneurship program, students create and develop their own product or service. Entrepreneurs and business experts from the community serve as coaches and mentors guiding student teams through the process of ideation, market research and business plan development.

Over the course of the year, student teams learn about product development, financial modeling, marketing, accounting, human resources and the legal aspects of running a business to get them geared up for "Pitch Week." "Pitch Week" helps to further fire the entrepreneurial spirit by putting student teams in front of actual investors to pitch their innovative ideas and possibly win funding to turn their business plans into reality during the summer and the following school year.



PROJECT LEAD THE WAY

Project Lead the Way (PLtW) is the nation's leading provider of Science, Technology, Engineering and Mathematics (STEM) programs. Through world-class K-12 curriculum, high-quality teacher professional development and outstanding partnerships, PLtW is helping students develop the skills needed to succeed in the global economy.

1:1 DEVICE PROGRAM

Students at Conrad Ball Middle School and Mountain View High School are provided with a technology device to use in all of their learning experiences. Students use a number of platforms and systems to enhance their learning through interaction with an iPad.

SCIENCE, TECHNOLOGY, ENGINEERING AND MATHEMATICS (STEM)

STEM is offered at Berthoud High School as a focused educational program. STEM Engineering is offered at Thompson Valley High School and Mountain View High School. An "Engineering Your World" program is hosted at TVHS and a "Project Lead the Way" program is based at MVHS and BHS. STEM strives to produce scientifically and mathematically literate graduates who can step into leadership positions at the most competitive postsecondary programs in the country. The curriculum, educational enrichment and interactive approach will develop scientists capable of planning, conducting and communicating their own investigations. Students design their own research project and work with an adult mentor during their junior and senior years. Included in the program is Pogil Chemistry, Project Lead the Way engineering classes and Advanced Placement options. Students interested in entering this rigorous program should call Berthoud High School at 970-613-7700. Three elementary schools—Big Thompson, Ivy Stockwell and Laurene Edmondson—and two middle schools—Turner and Walt Clark—are STEM focus schools. STEM provides a multiple-pathways-to-success approach so that all students can succeed. Students engage in problem-based learning centered on science, technology, engineering and math with literacy as the core. In collaborative groups, students solve real and relevant problems that cross all content areas with hands-on learning opportunities.

SCIENCE, TECHNOLOGY, ENGINEERING, ARTS AND MATHEMATICS (STEAM)

Thompson School District's High Plains School is proud to offer families an education based on the Science, Technology, Engineering, Arts and Mathematics (STEAM) model. Schools that use a STEAM framework to develop instruction are intentionally designing units and lessons to integrate concepts from science, math, history and the arts. Students learn the skills and knowledge in these content areas to support their reading, writing and communication skills. They also take that knowledge to an application level in an effort to help them understand why they are learning what they are learning. Technology and the engineering design process are taught to and used by students to apply their content learning in real world, relevant and meaningful ways through a problem-based learning approach. Students create and design new products or experiences to solve relevant, real-world problems. Through this problem-based approach, students develop their critical thinking skills, local and global awareness and communication and collaborative skills. A STEAM framework and problem-based learning approach sparks students' creativity and helps them to develop character traits such as perseverance, responsibility and citizenship, which will serve them well throughout their life. To learn more about STEAM, please visit the High Plains School website at thompsonschoools.org/highplains.

FERGUSON HIGH SCHOOL (FHS)

FHS is an alternative high school for 9th graders and higher designed to address the needs of the student for whom the regular comprehensive high school situation has not been successful.

EXPLORE, ENGAGE, EXPAND (E3)

E3 is an educational option for students in grades K-12 who have a passion to learn about a topic that is not taught in our district curriculum. Students identify what it is they want to learn about. They identify what they need to know and do to demonstrate they understand the concept. They work with a community member, who is their mentor, to be able to apply their new learning to their project. Students present their learning at the end of the year in a "Presentation of Learning" to a committee that awards the credit for the student. For more information, please visit <http://e3learning.co/>.

SECONDARY OPTIONS FOR ACHIEVEMENT RESULTING IN SUCCESS (SOARS)

SOARS is an alternative education program run by Thompson School District based out of Ferguson High School (FHS). It caters to juniors and seniors who have chosen not to pursue their education at a regular high school within the district. Learning is conducted using online software and is driven entirely by the student. The program is accessed in two computer labs at FHS. SOARS also offers an opportunity for home-schooled students to enhance their curriculum by learning in a classroom environment with a certified teacher, where we can assist with math and science instruction.

THOMPSON ONLINE

Thompson Online is an online school offering online education for students in kindergarten through 12th grade through Thompson School District. Students attend classes as Thompson students through an online portal. Students can access the curriculum and assignments 24 hours a day, 7 days a week from anywhere with an Internet connection. Online teachers interact with students through multiple venues, creating a virtual learning environment.

HOMESCHOOL COURSES

Homeschooled students have the opportunity to participate in the high school SOARS program as part-time students. They can select courses from a full, comprehensive high school curriculum. Students attend four hours per day, five days per week.

CREDIT RECOVERY

Credit recovery is for students in 9th through 12th grades who have failed a class required for graduation and need to make up those credits.

LOVELAND/BERTHOUD ENRICHMENT ACCESS PROGRAM (LEAP)

LEAP provides enrichment to students in grades K-12 and is designed to support parents who choose to school their children at home or outside of the public school setting. Parents remain the primary instructional providers with LEAP supplementing their efforts. Students who choose this educational option attend class one day a week or a minimum of six hours. LEAP teachers provide a variety of learning opportunities. Some classes may take place in a self-contained building while others are more project based and occur throughout the Loveland community.

PROJECT-BASED LEARNING

Project-Based Learning is offered at Lincoln Elementary School, which allows students to work together to gain knowledge and skills by investigating and responding to real-world problems and challenges. The focus of the program is on creating high interest, authentic, relevant and complex learning experiences.

LEADER IN ME

Carrie Martin Elementary School is a "Leader in Me" school. This leadership model assists in integrating a culture of character and leadership into the school experience based on the principles of Dr. Stephen R. Covey's "7 Habits of Highly Effective People." The Leader in Me program brings the "7 Habits" into the elementary school setting, where students can begin to develop these important skills at a very early age.

INTERNATIONAL BACCALAUREATE

International Baccalaureate (IB) is offered at three Thompson School District schools: Coyote Ridge Elementary School, Lucile Erwin Middle School and Loveland High School. Coyote Ridge Elementary has been certified as a Primary Years Programme school. Lucile Erwin Middle School and Loveland High School have been certified as Middle Years Programme schools. IB students who wish to continue after the Middle Years Programme may apply for the Diploma Programme at Loveland High School. The IB program is a multicultural, international approach to learning the "big picture" through inquiry and critical thinking. With IB, all subjects are equal in importance, including mathematics, science and technology, social studies, arts, language, and personal, social and physical health. Ponderosa Elementary School is a "Global Studies School" that feeds into the district IB program.

LOVELAND AREA INTEGRATED SCHOOL OF THE ARTS (LISA)

The LISA program is offered at Garfield Elementary School, Bill Reed Middle School and Mountain View High School. Not only do LISA students benefit from the arts instruction embedded in their core classes, there are many arts enrichment activities available to them as well. Extracurricular activities such as art and choir clubs, dance and performance opportunities give LISA students plenty of chances to show their talents both in the schools and at local arts venues such as the Rialto Theater, Barnes and Noble, and the Lincoln Gallery. All three schools build background knowledge and experiences in the arts through field trips and artist-in-residence opportunities.

DUAL LANGUAGE IMMERSION PROGRAM

Dual Language Immersion is a 50/50 program in Spanish offered at two schools: Truscott Elementary School and Cottonwood Plains Elementary School. Dual Language Immersion is an academic program that enhances the development of standards-based content in two languages, English and Spanish, as well as literacy in both languages so that students will graduate proficient in two languages, and ready for college, career and life in a globally competitive economy and a collaborative global community. This unique program builds student linguistic skills of listening, speaking, reading and writing in both English and Spanish. To learn more about the program, please call Truscott Elementary School at 970-613-6900 or Cottonwood Plains Elementary School at 970-613-5900.



Budget

GENERAL FUND OVERVIEW

The General Fund (GF) expenditures for Thompson School District (TSD) are approximately \$135 million annually (for 2016-2017 adopted budget). The budget includes money for staffing, curriculum materials and program support. On a limited basis, the GF budget also provides support for technology, student transportation and facility maintenance.

BUDGETING BACKGROUND

Financial transparency is a priority of the district. Each year, TSD conducts an extensive budget process designed to make best use of available resources toward the most critical program objectives. TSD wants students, parents and community members to be informed and involved in the annual budgeting process. As each step of the budget process unfolds, details on what is happening—and why—is presented to the Board of Education. The district also sponsors community forums and hosts a public input session with the Board of Education for citizens to provide input on the proposed budget items.

GENERAL FUND REVENUES

Approximately 82 percent (for adopted budget) of TSD's GF revenues are derived from this simple funding formula:

Enrollment x Per Pupil Revenue (PPR) = School Finance Act \$

SCHOOL FINANCE ACT (SFA) REVENUES

TSD receives these revenues on a limited basis from local property taxes and specific ownership taxes (vehicle registrations), with the largest portion coming directly from the state budget. The chart on the following page shows each source's relative contribution.

Beginning in 2010, the economic downturn began to negatively influence state funding of the SFA. The result was that all school districts received less than the statutory calculation of PPR. As a result, the cumulative under-funded (through 2016-2017 adopted budget) is \$101.6 million.

The remaining GF revenues include voter-approved overrides (additional local property tax for specific purposes), state-funded support for a portion of special education needs, specific ownership taxes from non-SFA sources (bonds and overrides), and partial support for student transportation on a reimbursement basis.

TSD TAX LEVIES ARE LOW

Compared to surrounding school districts, TSD's assessed mill levy rates are very low. Among the top 20 school districts in the state based on student population, TSD's rate is near the bottom. This means that property owners in TSD pay less in property taxes to fund their schools than similar properties in other Colorado communities.

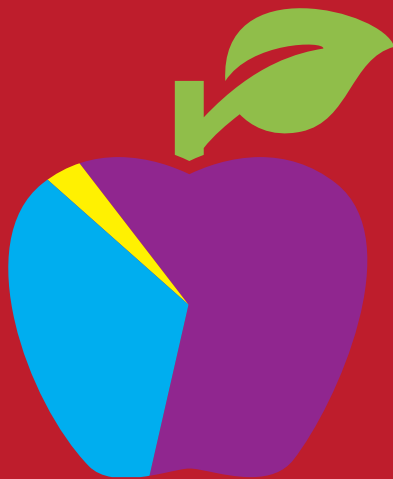
GF EXPENDITURES TARGET THE CLASSROOM

The community has entrusted TSD to make the best financial decisions to support and provide the greatest educational experience possible for students. That is a responsibility the district takes very seriously. Each expenditure or budgetary recommendation is completed with careful consideration.

Approximately 95 percent of the district's GF budget is spent directly on the "educational experience," including the cost of teachers and support staff, curriculum and materials, other program support and, on a limited basis, technology, student transportation and facility maintenance needs. All of these expenditures directly impact students. The remainder of the budget expenditures covers other necessary aspects of the district including human resource services, risk management, accounting and business services.

For more information on the district's finances and the budgeting process, please visit www.thompsonschoools.org.

Who Pays for the TSD School Finance Act?



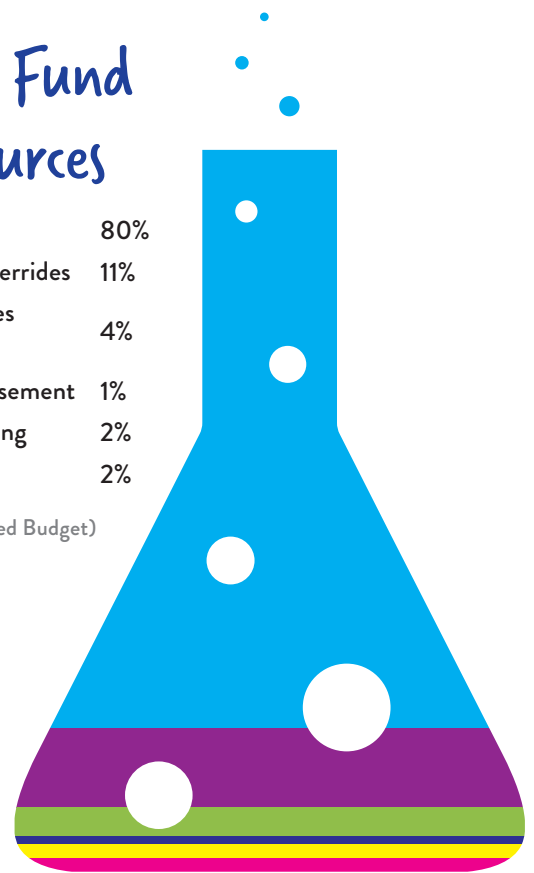
State Equalization	64%*
Property Tax	33%
Specific Ownership Tax	3%

(*Approximately 36% of state's budget, but declining per Colorado Department of Education - Public school finance funding (2016-2017))

TSD General Fund Revenue Sources

School Finance Act	80%
Property Taxes from Overrides	11%
Specific Ownership Taxes from Bond & Overrides	4%
Transportation Reimbursement	1%
Special Education Funding	2%
All Other	2%

(Per TSD 2016-2017 Adopted Budget)



Mill Levy Rates

School District	Total Mills
Arapahoe	66.648
Adams 12	66.017
Academy	60.216
St Vrain	53.887
Littleton	53.424
Poudre	52.630
Cherry Creek	49.703
Brighton	49.359
Jefferson County	47.487
Denver	47.397
Boulder Valley	45.814
Falcon	44.635
Douglas County	42.439
Windsor	41.494
Colorado Springs	40.803
Pueblo County	39.995
Thompson	38.393
Mesa County Valley	36.845
Harrison	36.414
Greeley	36.003
Pueblo City	35.234

(Per Colorado Department of Education Mill Levies & Overrides - Fiscal year 2015-2016)

Expenses

Schools and Direct Support	95%
Indirect Support	5%

(Per 2016-2017 Adopted Budget)





How To Get Involved



HELP US MAKE A DIFFERENCE!

Thompson School District is not just a collection of schools and administrative buildings; it's a collaborative entity that plays a critical role in the community. Thompson students receive more than just a great education; they are exposed to a variety of unique opportunities to expand their horizons and help set them on the course of their own bright future. Want to join the team? Here are a few ways to get involved in your school district and make a difference. We promise it's a decision you won't regret!

BECOME AN AUTHORIZED VOLUNTEER

Volunteers in Thompson Assisting Learners (VITAL) is a district program that encourages parents and community members to share their time and knowledge with Thompson students by becoming authorized volunteers. To join the team, simply visit www.thompsonschoools.org and register. To help ensure the safety and security of students, all volunteers must complete a background check. The process is easy and we'll even cover the cost! Once you have been authorized, you will be able to volunteer at any school of your choosing, completing a variety of rewarding tasks such as reading to elementary school students, tutoring, assisting with field trip opportunities and more. Over 7,000 parents and community

members are currently authorized volunteers. Each year, that volunteer base completes over 79,000 hours of service to the district, an equivalent of over a million dollars in labor costs.

THOMPSON STAKEHOLDERS

The Thompson Stakeholders group meets monthly at the district administrative office located at 800 South Taft Avenue in Loveland. Consisting of PTO/PTA presidents, School Accountability Committee officials, volunteer coordinators and other interested parents and community members, the group shares information and helps the district solve challenges in our schools. Everyone in the public is welcome to attend. For a listing of the meeting dates and times, please visit www.thompsonschoools.org.

SERVE ON A COMMITTEE

The district has a multitude of committee service opportunities for parents and other community members, including the District Accountability Committee (DAC), School Accountability Committees (SAC), the district Master Plan committee and more. Each group provides a valuable service and helps guide and shape district policy. For more information, please contact your school.





800 S TAFT AVE, LOVELAND, CO 80537
(970) 613-5000

THOMPSONSCHOOLS.ORG

Thompson School District does not discriminate on the basis of race, color, creed, national origin, ancestry, sex, sexual orientation, age, disability, religion, or other status protected by law in admission or access to, or treatment and employment in, its programs and activities. The following individuals have been designated to handle inquiries regarding the district's non-discrimination policies:

Student ADA/Section 504 Compliance Officer
Director of Student Support Services
Thompson R2-J School District
800 South Taft Avenue
Loveland, CO 80537
970-613-5000

Title IX/Employee ADA/Section 504/EEO Compliance Officer
Director of Human Resources
Thompson R2-J School District
800 South Taft Avenue
Loveland, CO 80537
970-613-5000

Please see District Policy AC and related regulations for details regarding the district's prohibition against discrimination and its complaint procedures.